

3 Rivers White B06

3 Rivers SC

Pasco, WA

B06 total strength=343

attack=0.35 defense=0.12

fall league = PSPL-Inland Copa 1 West U11

alt names used:

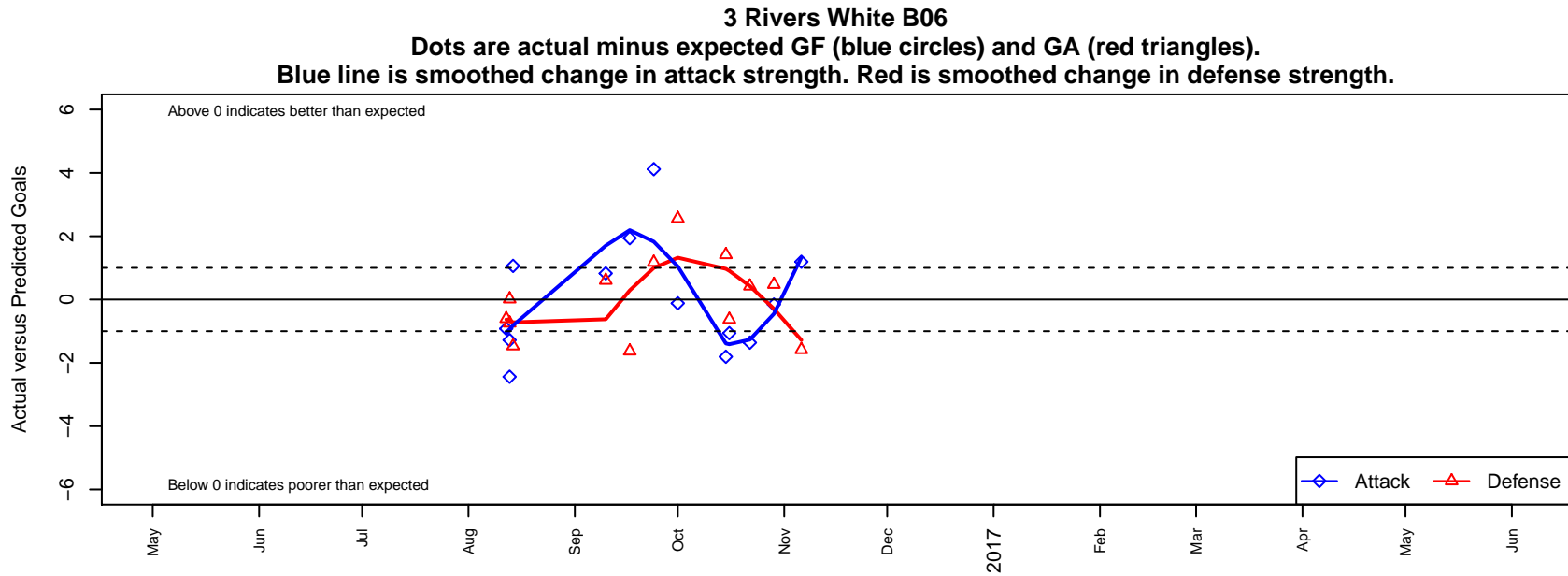
THREE RIVERS SOCCER 3RSC B06 WHITE

Three Rivers Soccer Club 3rsc B06 pspl white

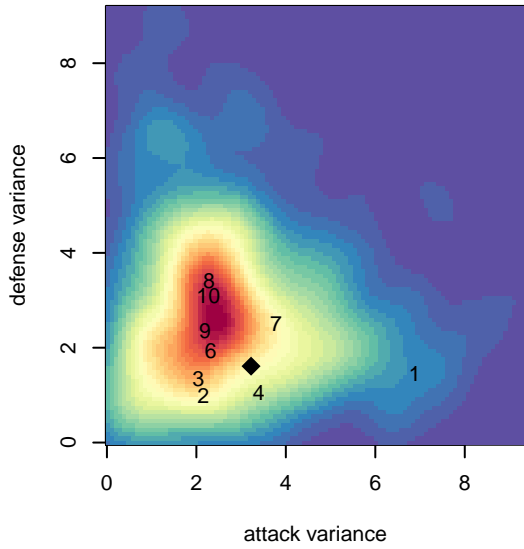
Venues played:

2016 Les Schwab NW Cup U11 U11

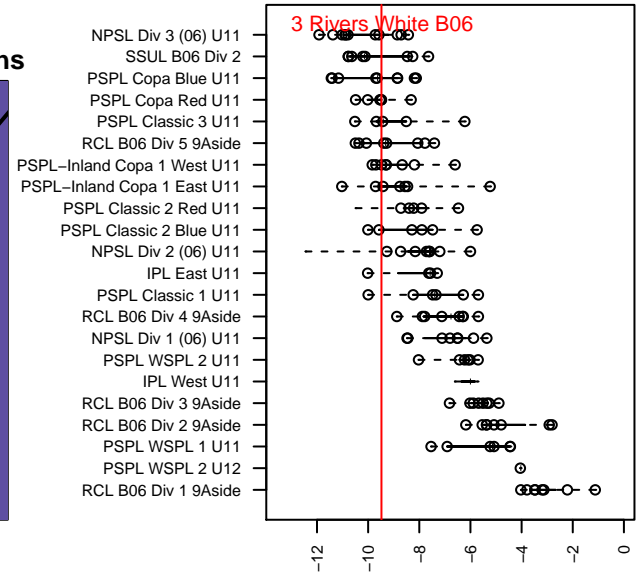
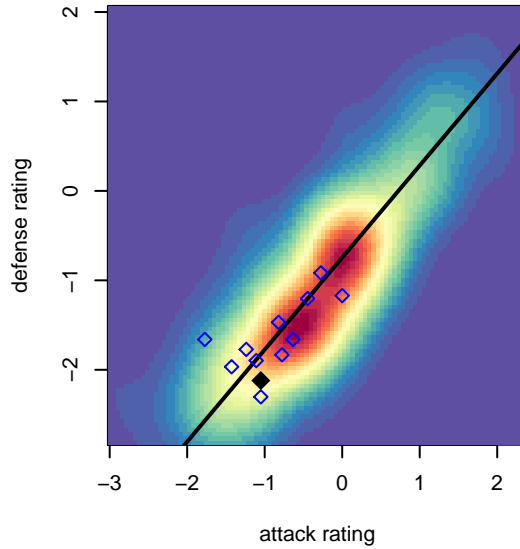
2016 PSPL-Inland Copa 1 West U11



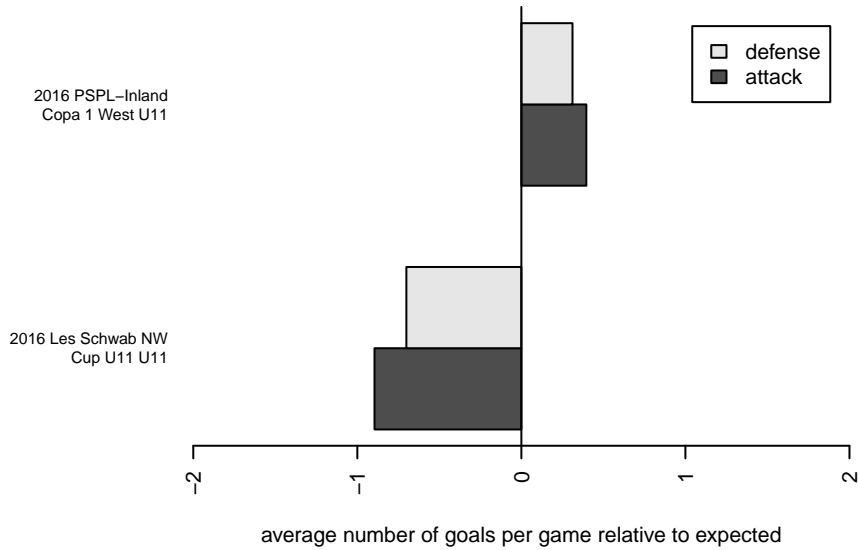
**attack and defense variance (black dot)
relative to other teams
and top 10 in region**



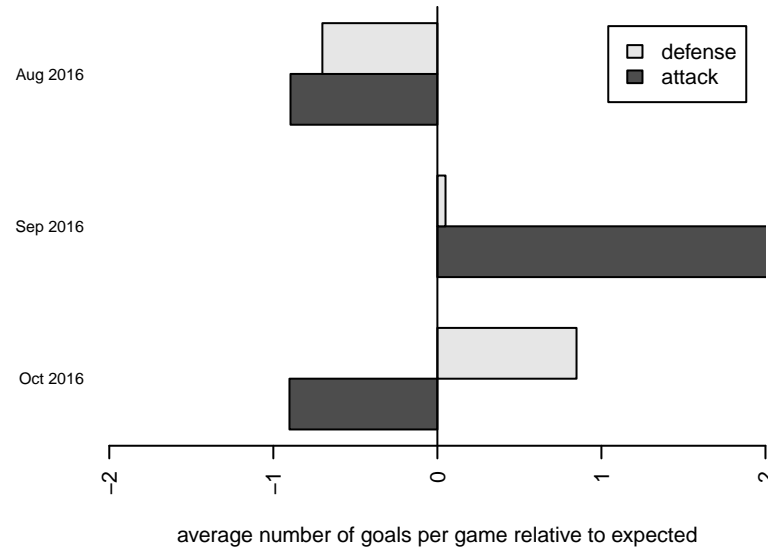
**attack and defense rating
relative to others at age
and all opponents in last 13 months**



Performance relative to 13 month average



Performance relative to 13 month average



date	home		away		venue	pred.home	pred.away
2016-11-06	3 Rivers White B06	3	KVJSA Ellensburg FC B06	3	2016 PSPL-Inland Copa 1 West U11	1.81	1.41
2016-10-29	Central WA SA White B06	2	3 Rivers White B06	2	2016 PSPL-Inland Copa 1 West U11	2.48	2.16
2016-10-22	3 Rivers Green B06	4	3 Rivers White B06	0	2016 PSPL-Inland Copa 1 West U11	4.42	1.36
2016-10-16	3 Rivers White B06	1	Walla Walla United B06	4	2016 PSPL-Inland Copa 1 West U11	2.06	3.37
2016-10-15	KVJSA Ellensburg FC B06	0	3 Rivers White B06	0	2016 PSPL-Inland Copa 1 West U11	1.41	1.81
2016-10-01	3 Rivers White B06	1	Leavenworth Storm B06	5	2016 PSPL-Inland Copa 1 West U11	1.12	7.56
2016-09-24	3 Rivers White B06	8	Endeavor SA B06	1	2016 PSPL-Inland Copa 1 West U11	3.88	2.17
2016-09-17	Walla Walla United B06	5	3 Rivers White B06	4	2016 PSPL-Inland Copa 1 West U11	3.37	2.06
2016-09-10	3 Rivers White B06	3	Wenatchee Valley United Mini Villa B06	3	2016 PSPL-Inland Copa 1 West U11	2.18	3.60
2016-08-14	Sting SC Timbers Black B06	6	3 Rivers White B06	3	2016 Les Schwab NW Cup U11 U11	4.53	1.94
2016-08-13	3 Rivers White B06	0	SSC Shadow Select B06	2	2016 Les Schwab NW Cup U11 U11	2.44	2.02
2016-08-13	Spokane Sounders South A B06	6	3 Rivers White B06	0	2016 Les Schwab NW Cup U11 U11	5.25	1.28
2016-08-12	FC Spokane Black Tomimatsu B06	7	3 Rivers White B06	0	2016 Les Schwab NW Cup U11 U11	6.39	0.92